

Architecture of Operations

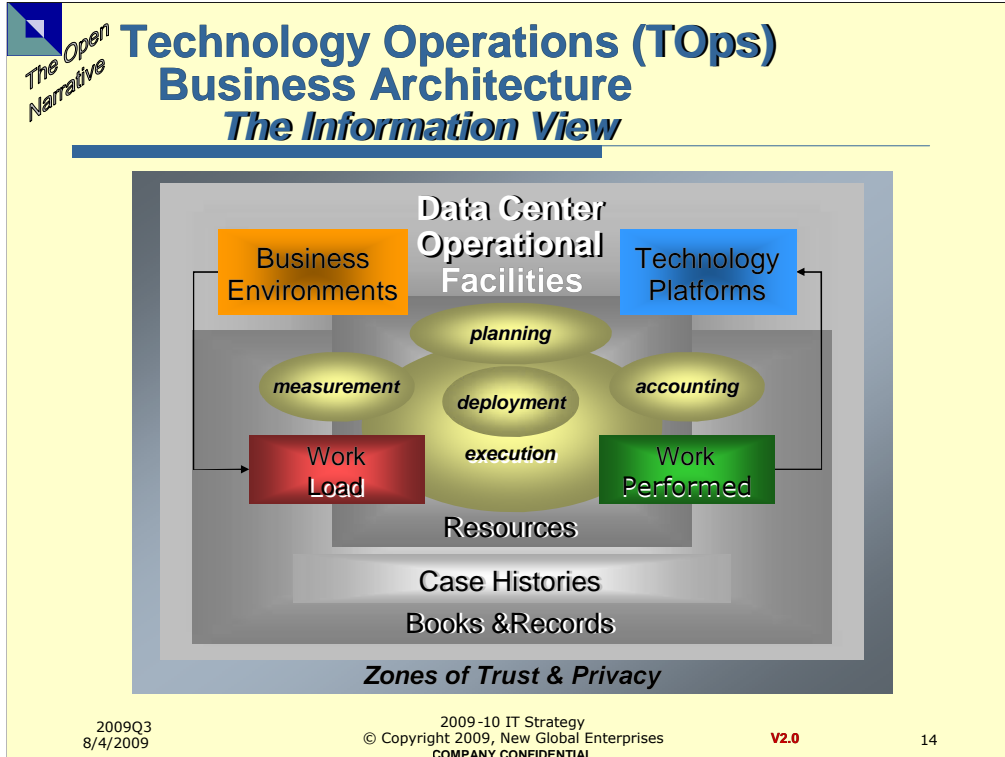
The Business of Operating Data Centers *Virtual and Real*

2009Q3
8/4/2009

2009-10 IT Strategy
© Copyright 2009, New Global Enterprises
COMPANY CONFIDENTIAL

V2.0

13



This is a UI Navigation Icon

Zones of Privacy & Trust

- Identity Management
- Role Based Authority
- Aberrant Behavior Alerting
- Regulatory Reporting

Books & Records

- Case History

Capabilities

- Deployment
- Measurement
- Planning
- Execution
- Accounting

Resources

Work Load

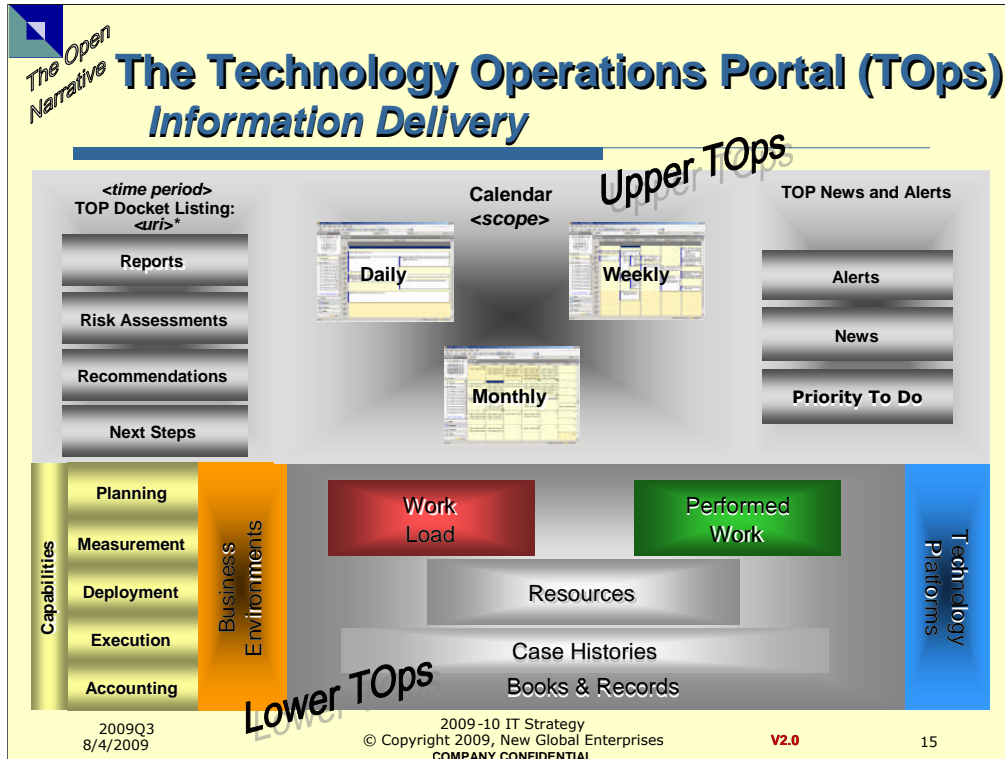
Performed Work

Environments

Business Process Focused: Offer to Cash, e.g., focused on fitness for business purposes

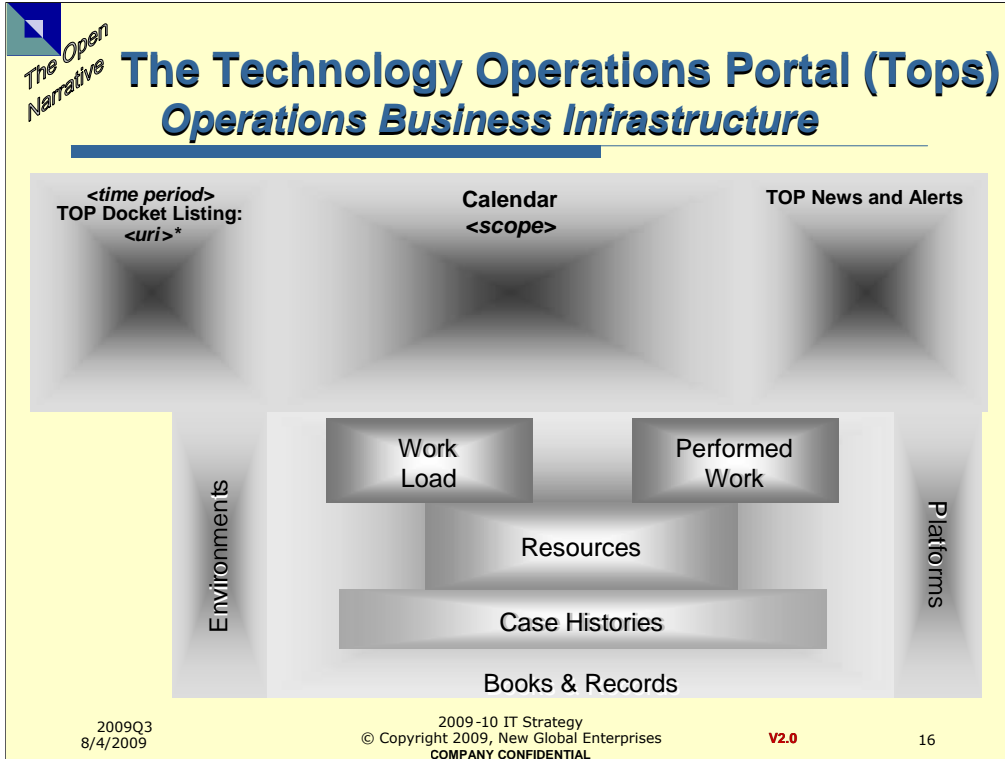
Platforms

Stacks & Racks, Open where possible, focused on cost of operations



Operation UI

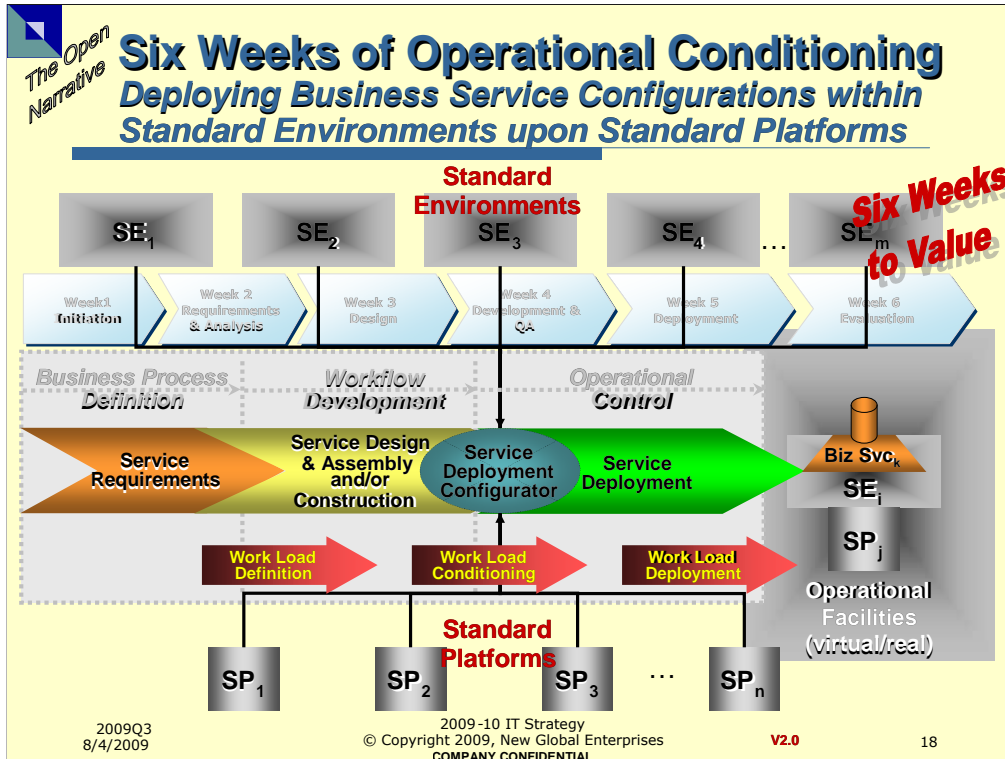
Buttons and Bars



Implement via a third-party Portal Platform with Collaboration Capabilities

Deploying Business Services into Operations

Instantiating Environments and Platforms that provision Business Services within Operational Facilities



Application Development Process Infrastructure

View this page as a presentation to see the story of **Standard Environments** upon **Standard Platforms**.

The Standard Specification Nibs

1. BP Definition
2. Work Flow Development, and,
3. Operational Control

Codex is developed and maintained through the IT Project Delivery 5 Phases: Initiation, Requirements & Analysis, Design, Development & QA, Deployment

Specifically, services are defined via a Service Requirements Process, followed by a Service Design & Assembly and/or Construction Process, bridged by a Service Deployment Configuration Process that binds the Business Standard Environment for that Service with a Technology Standard Platform.

And in so doing, the Work Load is defined, conditioned and deployed.